

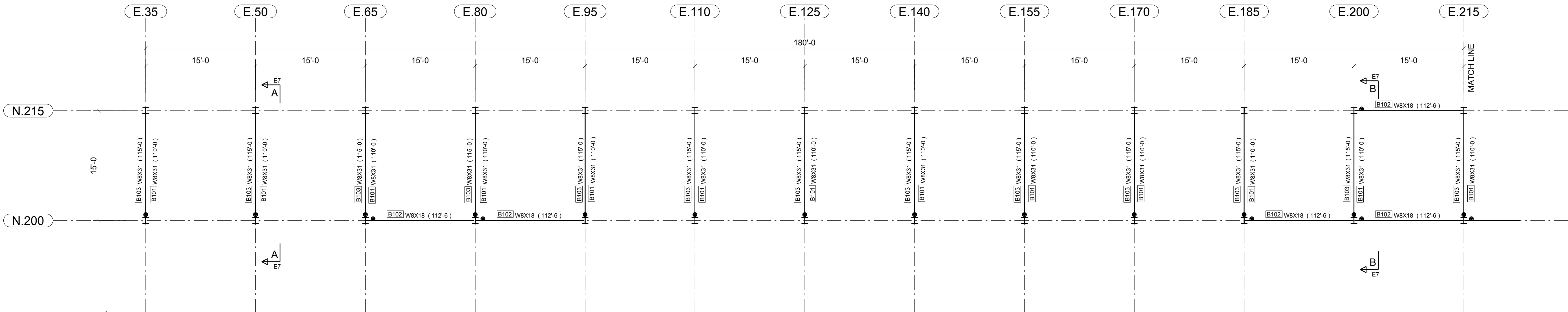


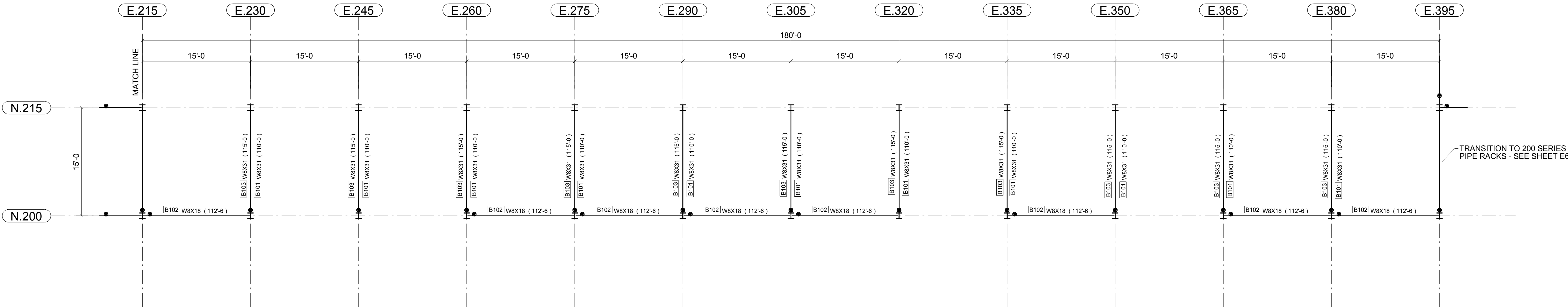
DRAWING LIST

- E1 - KEY PLAN LAYOUT
- E2 - 100 SERIES PLAN VIEW
- E3 - 100 SERIES ELEVATION
- E4 - 100 SERIES ELEVATION
- E5 - 200 SERIES PLAN VIEW
- E6 - 200 SERIES ELEVATIONS
- E7 - 200 SERIES FRAME DETAIL
- E8 - 300 SERIES FRAMING



REVISIONS				
NO.	DATE	DESCRIPTION		REV. BY
0	12/29/13	ISSUED FOR CONSTRUCTION		MS
<div><div></div><div>DENNIS STEEL, INC. 1105 LEANDER DR- LEANDER TX 78641 PH 512 259-4001 / FAX 512 259-1070</div><div></div></div>				
PAINT		HOLES U.N.	WELD U.N. E70XX	APPL. SHOP
PROJECT		PECAN PIPELINE - ZENA PIPE RACK PECOS, TX		DATE 12/26/2013
DESCRIPTION		KEY PLAN LAYOUT		DRAWN BY MWS
ARCH.		ENG.		CHKD BY -
CUSTOMER		JOB NO.		SHT. NO.
		7890		E1

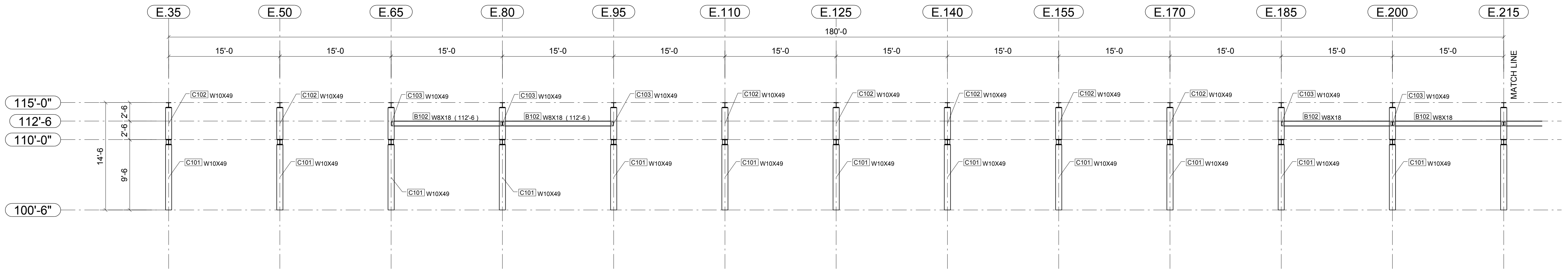


PLAN VIEW AT 100 SERIES PIPE RACK - 1
REF: ZNA-CS-4710 - 4711 - 4712

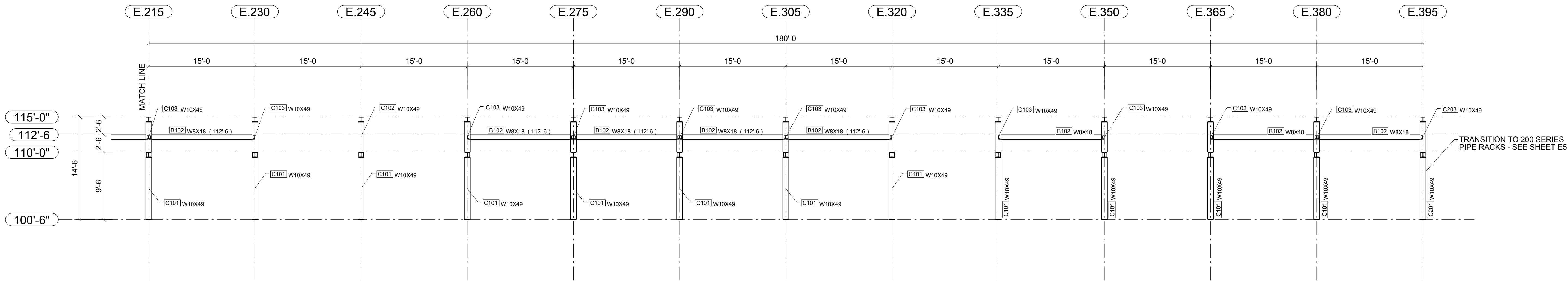


PLAN VIEW AT 100 SERIES PIPE RACK - 2
REF: ZNA-CS-4710 - 4711 - 4712


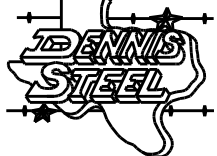
REVISIONS				
NO.	DATE	DESCRIPTION		REV. BY
0	12/29/13	ISSUED FOR CONSTRUCTION		MS
<div><div></div><div>DENNIS STEEL, INC. 1105 LEANDER DR- LEANDER TX 78641 PH 512 259-4001 / FAX 512 259-1070</div><div></div></div>				
PAINT		HOLES U.N.	WELD U.N.	APPL. SHOP
PROJECT		E70XX		DATE
DESCRIPTION		100 SERIES PIPE RACK FRAMING		DRAWN BY
ARCH.		KAHUNA VENTURES, LLC		CHKD BY
CUSTOMER		PECAN PIPELINE COMPANY		JOB NO.
				SHT. NO.

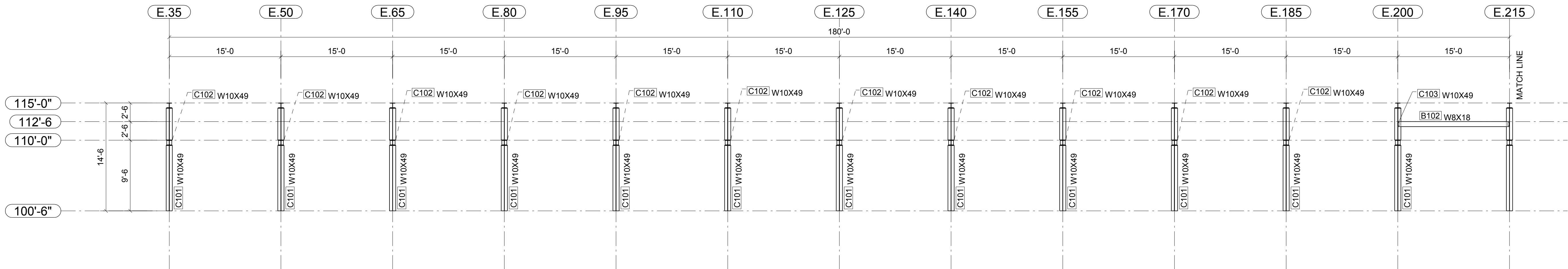


ELEVATION AT GRID LINE 200 - 1
REF: ZNA-CS-4710 - 4711 - 4712

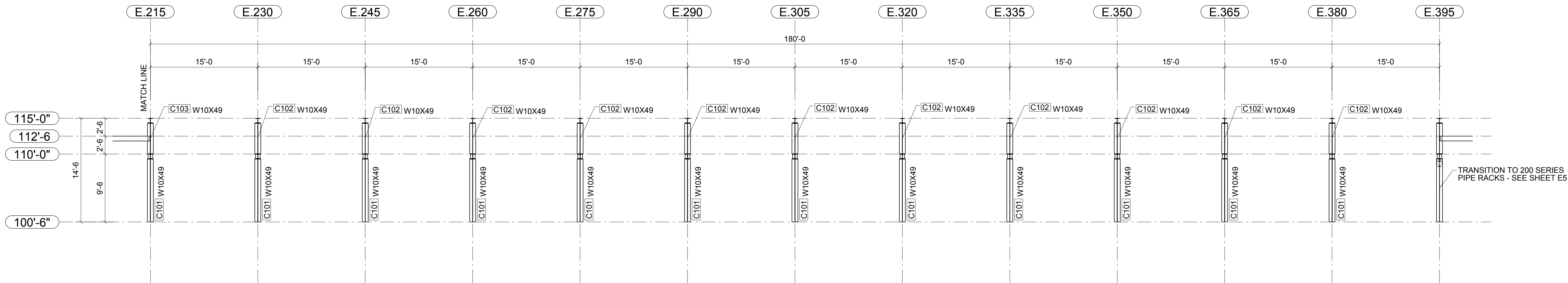


ELEVATION AT GRID LINE 200 - 2
REF: ZNA-CS-4710 - 4711 - 4712


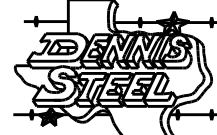
REVISIONS			
NO.	DATE	DESCRIPTION	REV. BY
0	12/29/13	ISSUED FOR CONSTRUCTION	MS
<div><div></div><div>DENNIS STEEL, INC. 1105 LEANDER DR- LEANDER TX 78641 PH 512 259-4001 / FAX 512 259-1070</div><div></div></div>			
PAINT		HOLES U.N.	WELD U.N.
PROJECT		DATE	
DESCRIPTION		DRAWN BY	
ARCH.		CHK'D BY	
CUSTOMER		JOB NO.	
		SHT. NO.	

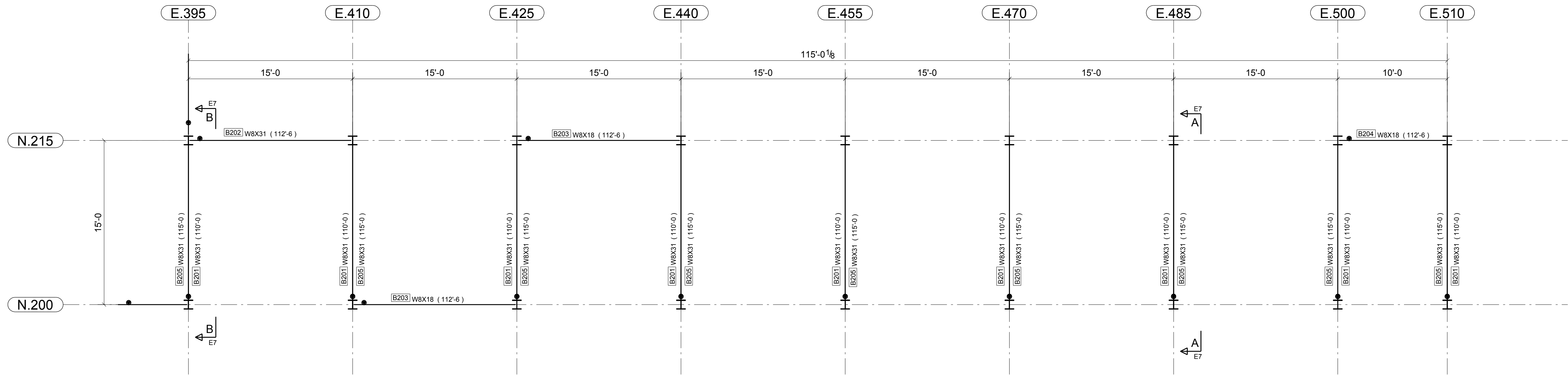


ELEVATION AT GRID LINE 215 - 1
REF: ZNA-CS-4710 - 4711 - 4712


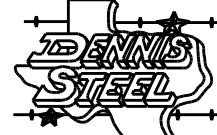


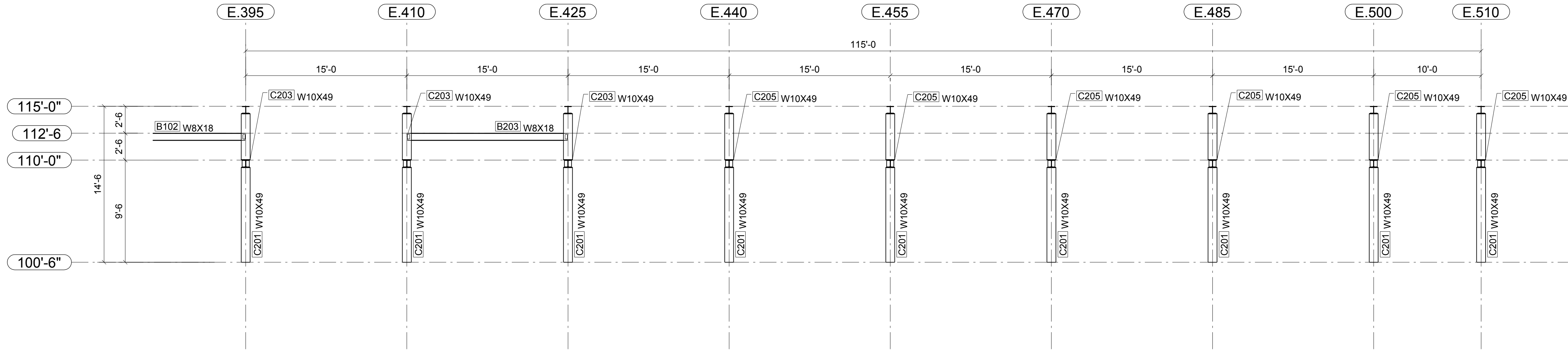
ELEVATION AT GRID LINE 215 - 2
REF: ZNA-CS-4710 - 4711 - 4712

REVISIONS				
NO.	DATE	DESCRIPTION		REV. BY
0	12/29/13	ISSUED FOR CONSTRUCTION		MS
<div><div></div><div>DENNIS STEEL, INC. 1105 LEANDER DR- LEANDER TX 78641 PH 512 259-4001 / FAX 512 259-1070</div><div></div></div>				
PAINT		HOLES U.N.	WELD U.N. E70XX	APPL. SHOP
PROJECT		PECAN PIPELINE - ZENA PIPE RACK PECOS, TX		DATE 12/29/2013 DRAWN BY MWS
DESCRIPTION		100 SERIES PIPE RACK FRAMING		CHKD BY -
ARCH.	ENG.		JOB NO.	
KAHUNA VENTURES, LLC		KAHUNA VENTURES, LLC	7890	
CUSTOMER	PECAN PIPELINE COMPANY		SHT. NO. E4	

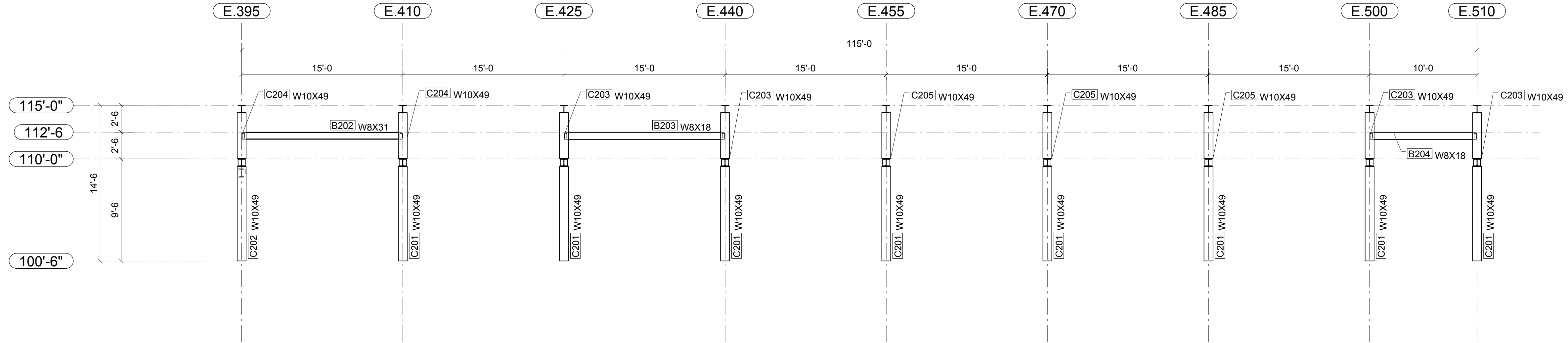


PLAN VIEW AT 200 SERIES PIPE RACK
REF: ZNA-CS-4715 - 4716



REVISIONS				
NO.	DATE	DESCRIPTION		REV. BY
0	12/29/13	ISSUED FOR CONSTRUCTION		MS
<div><div></div><div>DENNIS STEEL, INC. 1105 LEANDER DR- LEANDER TX 78641 PH 512 259-4001 / FAX 512 259-1070</div><div></div></div>				
PAINT		HOLES U.N.	WELD U.N.	APPL. SHOP
PROJECT		E70XX		
PECAN PIPELINE - ZENA PIPE RACK PECOS, TX			DATE	12/26/2013
			DRAWN BY	MWS
DESCRIPTION			CHKD BY	-
200 SERIES PIPE RACK FRAMING				
ARCH.	ENG.		JOB NO.	7890
KAHUNA VENTURES, LLC			KAHUNA VENTURES, LLC	
CUSTOMER	PECAN PIPELINE COMPANY			SHT. NO. E5

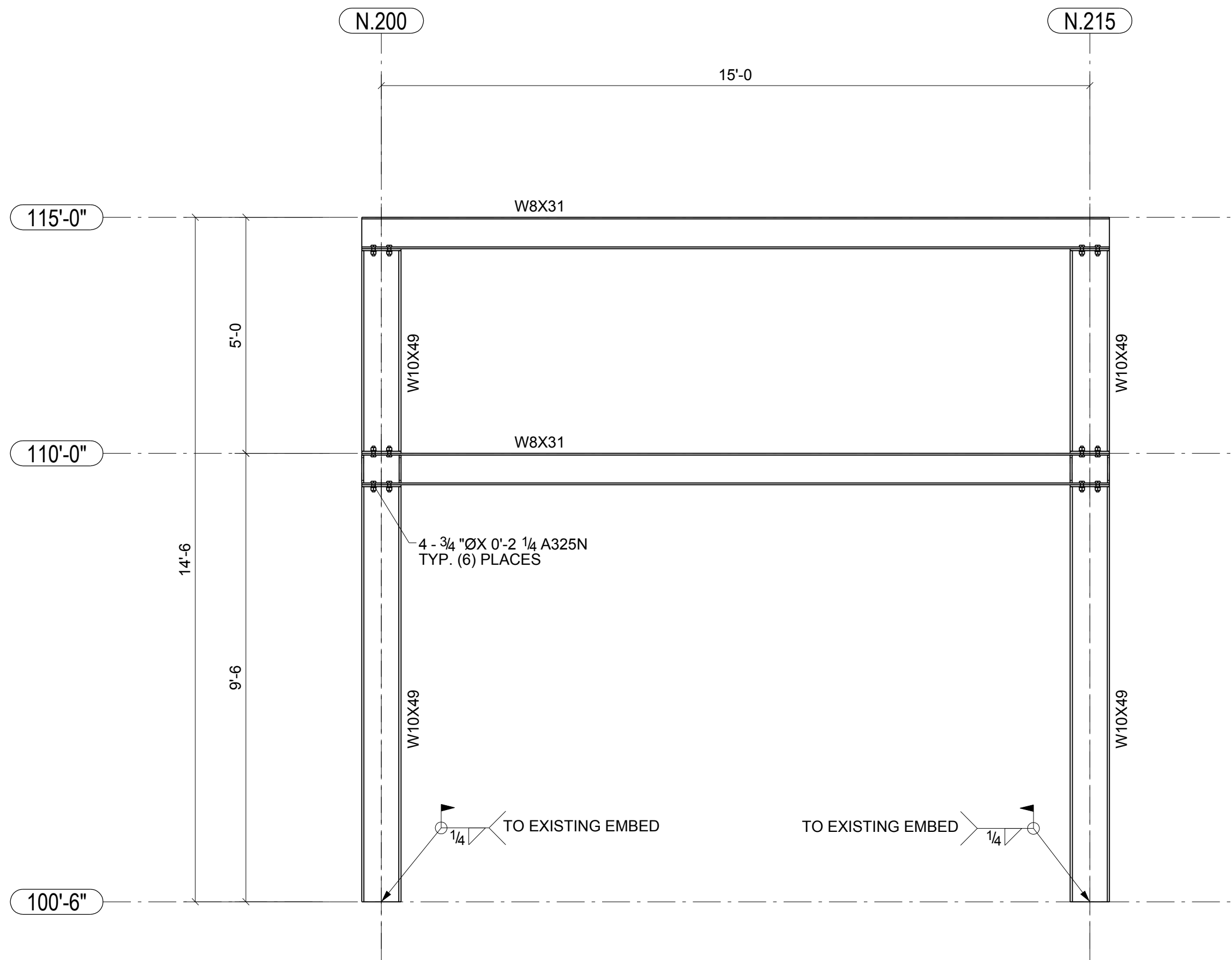


ELEVATION AT GRID LINE N.200
REF: ZNA-CS-4715 - 4716

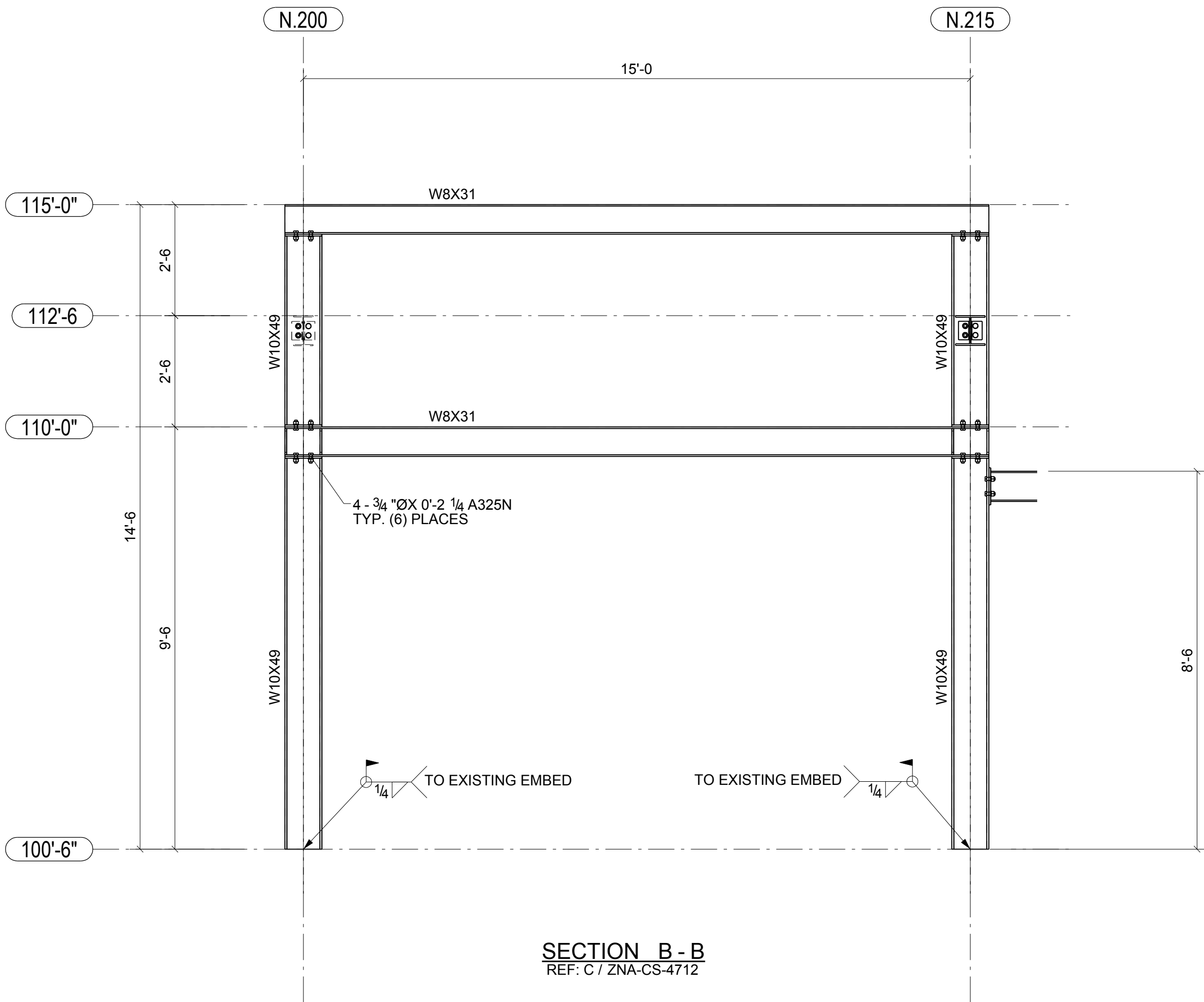


ELEVATION AT GRID LINE N.215
REF: ZNA-CS-4715 - 4716



REVISIONS				
NO.	DATE	DESCRIPTION		REV. BY
0	12/29/13	ISSUED FOR CONSTRUCTION		MS
		DENNIS STEEL, INC. 1105 LEANDER DR- LEANDER TX 78641 PH 512 259-4001 / FAX 512 259-1070		
PAINT		HOLES U.N.	WELD U.N. E70XX	APPL. SHOP
PROJECT		PECAN PIPELINE - ZENA PIPE RACK PECOS, TX		DATE 12/26/2013
DESCRIPTION		200 SERIES PIPE RACK FRAMING		DRAWN BY MWS
ARCH.		ENG. KAHUNA VENTURES, LLC		CHKD BY -
CUSTOMER		KAHUNA VENTURES, LLC		JOB NO. 7890
		PECAN PIPELINE COMPANY		SHT. NO. E6

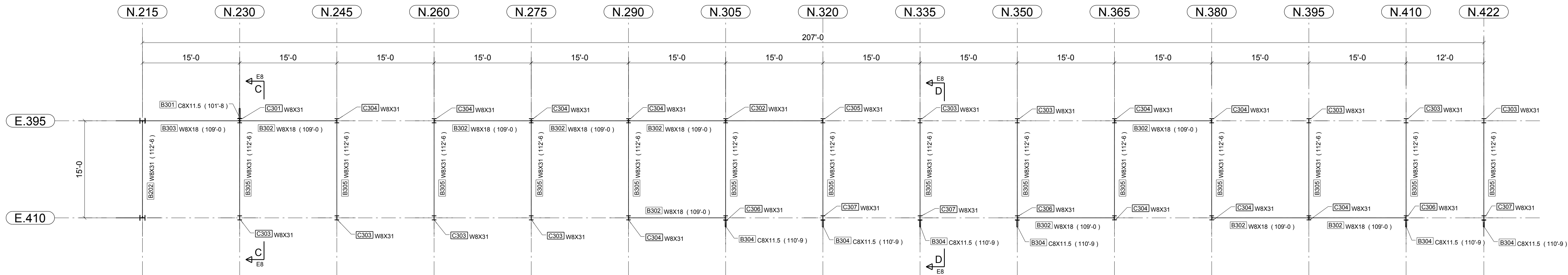


SECTION A-A
REF: C / ZNA-CS-4712

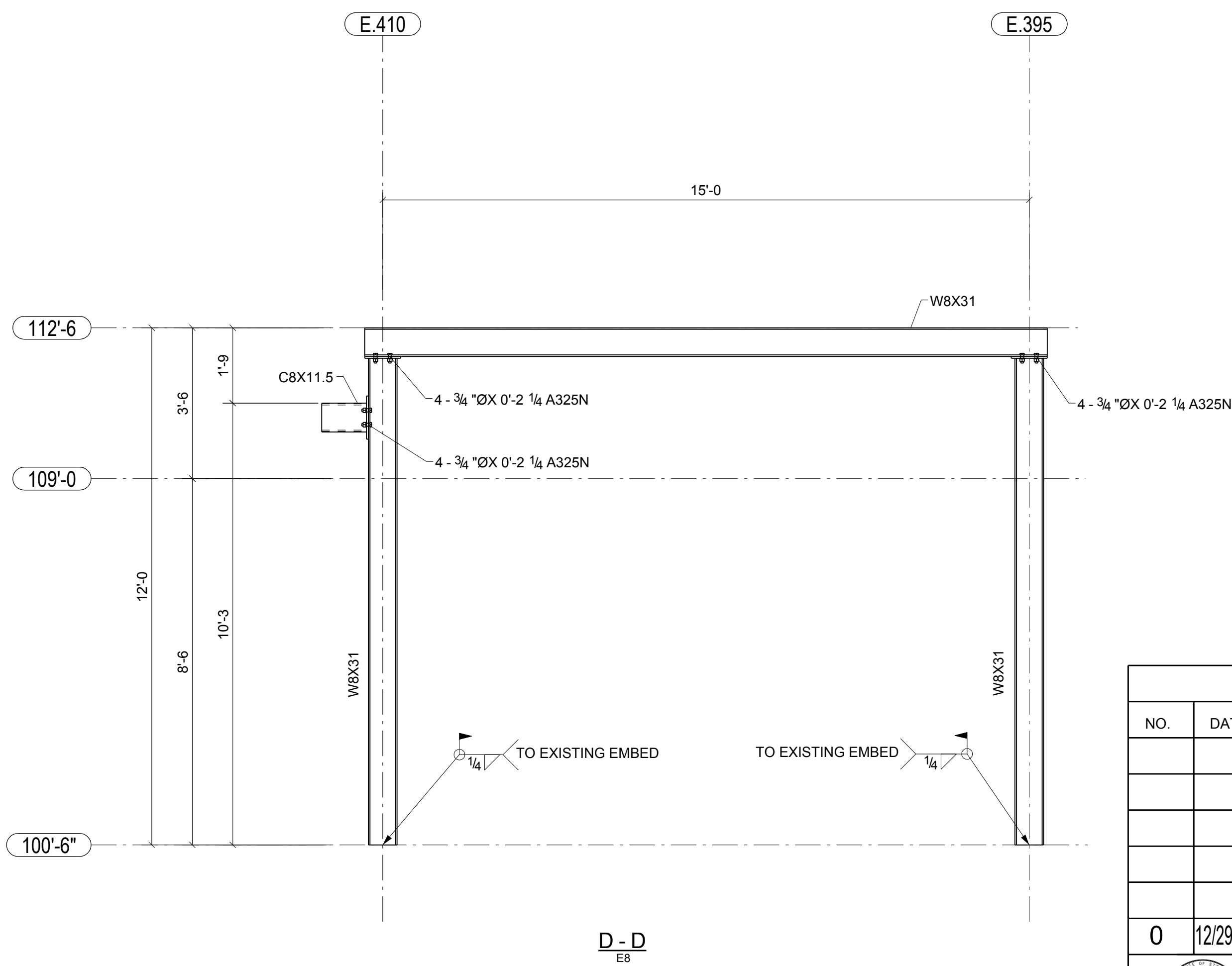
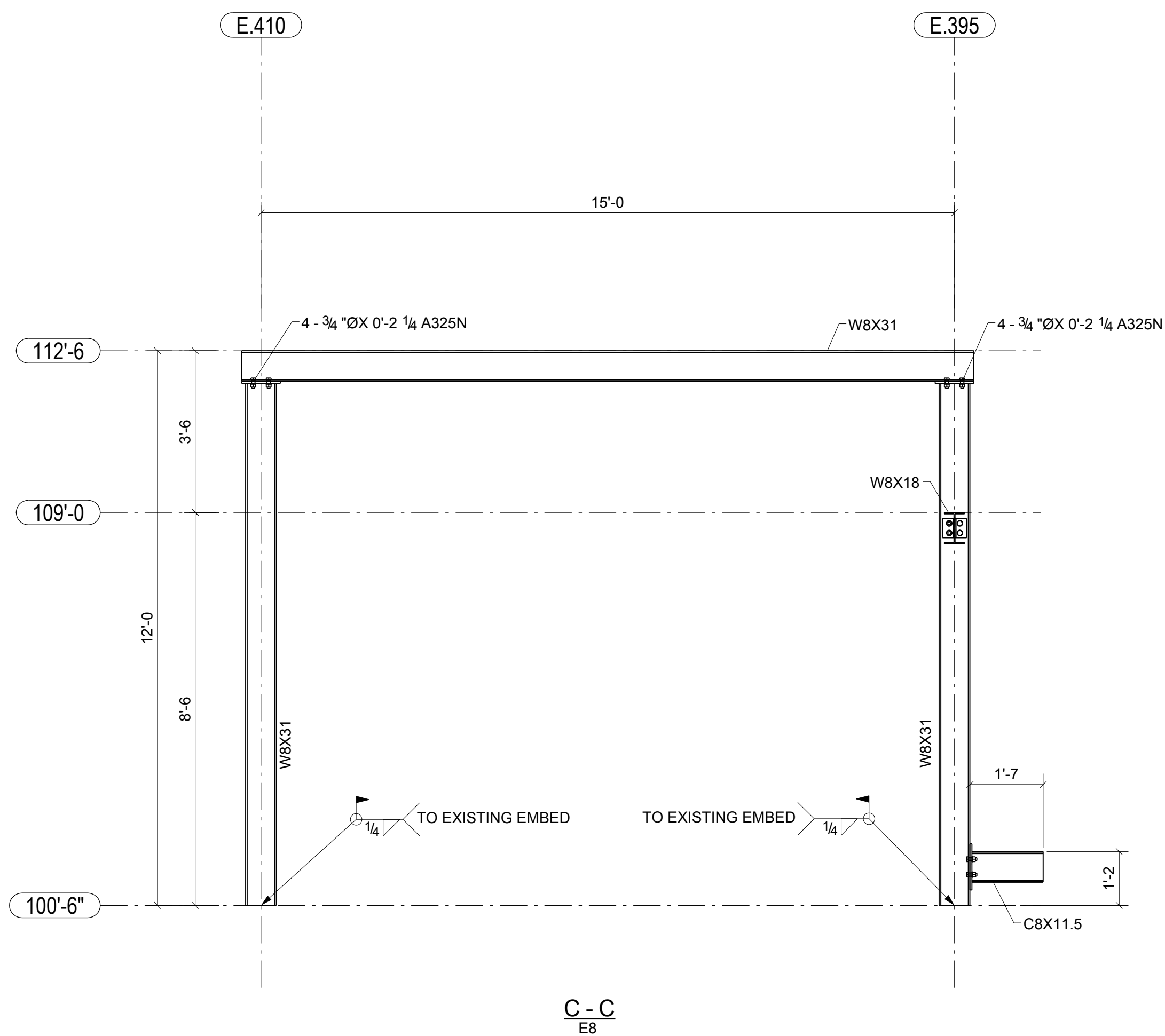




SECTION B-B
REF: C / ZNA-CS-4712

REVISIONS				
NO.	DATE	DESCRIPTION		REV. BY
0	12/29/13	ISSUED FOR CONSTRUCTION		MS
<div><div></div><div>DENNIS STEEL, INC. 1105 LEANDER DR- LEANDER TX 78641 PH 512 259-4001 / FAX 512 259-1070</div><div></div></div>				
PAINT		HOLES U.N.	WELD U.N. E70XX	APPL. SHOP
PROJECT		PECAN PIPELINE - ZENA PIPE RACK PECOS, TX		DATE 12/26/2013
DESCRIPTION		200 SERIES PIPE RACK FRAMING		DRAWN BY MWS
ARCH.		ENG. KAHUNA VENTURES, LLC		CHKD BY -
CUSTOMER		KAHUNA VENTURES, LLC		JOB NO. 7890
		PECAN PIPELINE COMPANY		SHT. NO. E7



PLAN VIEW AT 300 SERIES PIPE RACK
REF: ZNA-CS-4720 - 4721 - 4722



REVISIONS			
NO.	DATE	DESCRIPTION	REV. BY
0	12/29/13	ISSUED FOR CONSTRUCTION	MS
<div><div></div><div>DENNIS STEEL, INC. 1105 LEANDER DR- LEANDER TX 78641 PH 512 259-4001 / FAX 512 259-1070</div><div></div></div>			
PAINT		HOLES U.N.	WELD U.N.
PROJECT		E70XX	
DESCRIPTION		APPL.	SHOP
ARCH.		DATE	DATE
CUSTOMER		DRAWN BY	DATE
		CHK'D BY	
		JOB NO.	
		SHT. NO.	